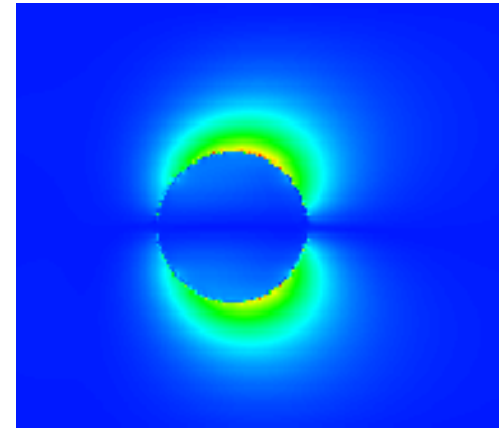
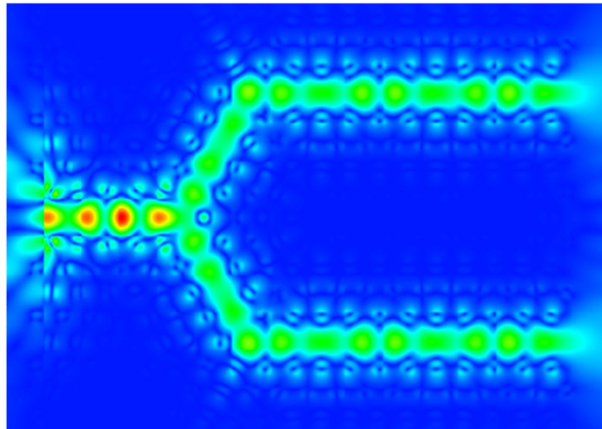
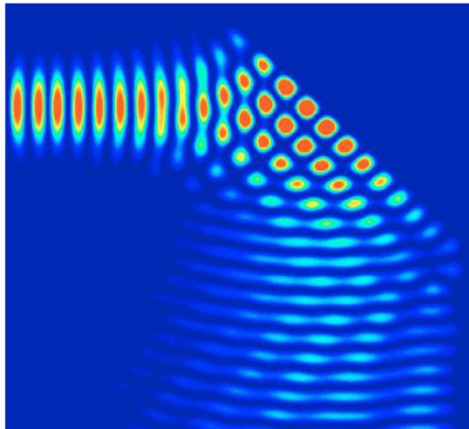




OptiFDTD



OptiFDTD 12

Release overview (Nov. 11th 2013)



7 Capella Court
Nepean, ON, Canada
K2E 7X1

+1 (613) 224-4700
www.optiwave.com



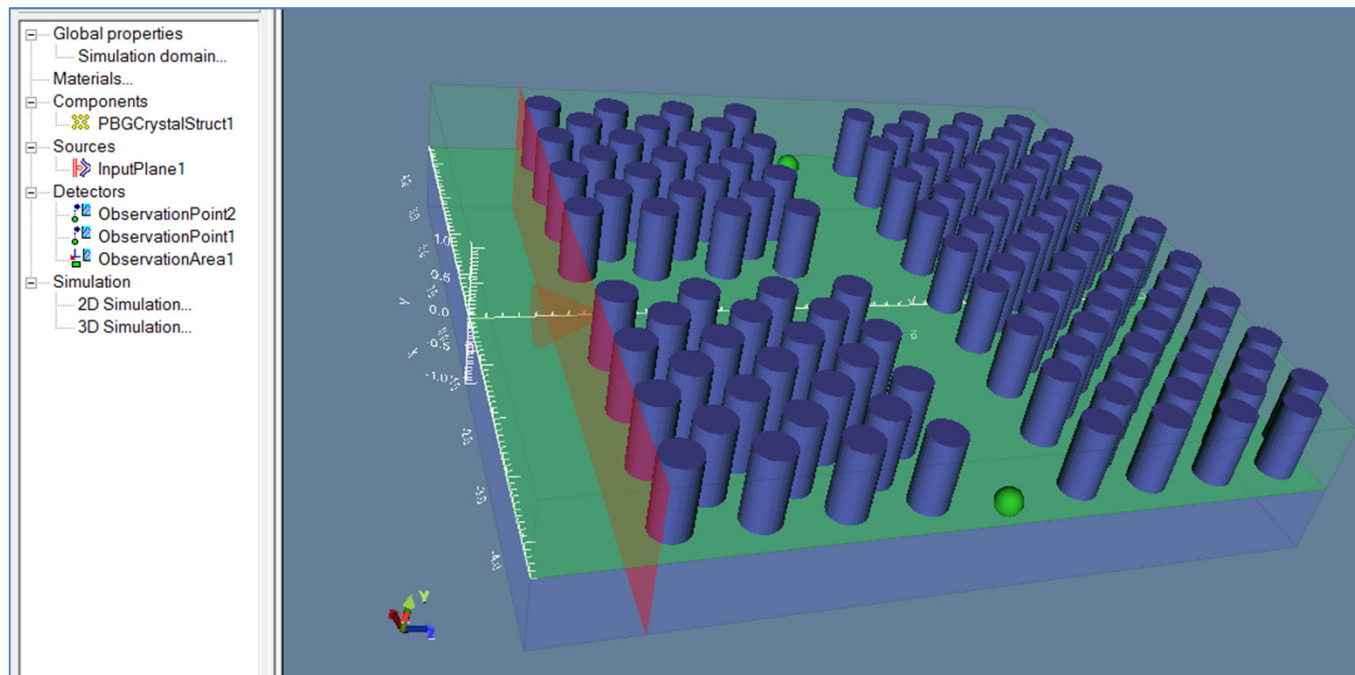
New features in release 12

Available January
2013!

3D editor and Project Browser

The graphical user interface of OptiFDTD has been significantly improved to offer a more intuitive design approach:

1. The Project Browser now lists all items existing in the simulation domain (ordered by categories), making it is easier to choose and edit properties in complex layouts.
2. The 3D editor has been dramatically enhanced, allowing users to rotate and edit object properties within the 3D view.
3. Users can choose either a single 3D window or multiple windows, in both regular view or wireframe mode.
4. 3D viewing capabilities have been added to OptiFDTD Analyzer to ease & enhance analysis of results.



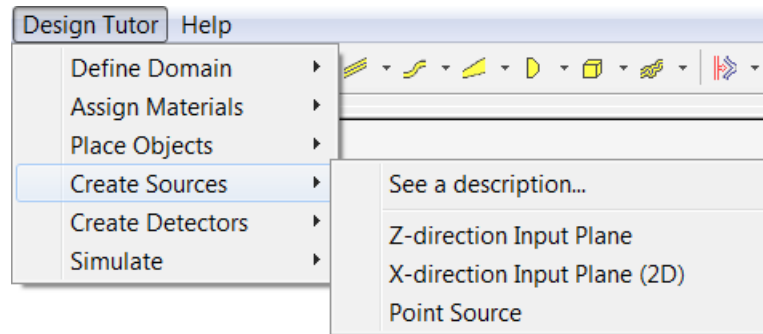


New features in release 12

Available January
2013!

Design Tutor

The design tutor is a new menu aimed at first-time users of OptiFDTD. It provides an easy workflow for performing the steps needed to successfully design & run a simulation.



Full 64-bit

OptiFDTD has been thoroughly re-engineered to provide an enhanced experience to users of 64-bit operating systems. The result is a clutter-free graphical user interface with increased performance (as a result of our multithreaded simulation engine). With no memory limit, users are able to design extremely complex 3D simulations without compromising precision or accuracy!

Additional Improvements

Many other improvements are included in OptiFDTD 12. For example:

- New movie compression scheme for smaller video files.
- Improved FD mode solver in OptiMode (included with OptiFDTD).
- Improved visualization of fields and refractive index data.
- Improved Windows 8 support.